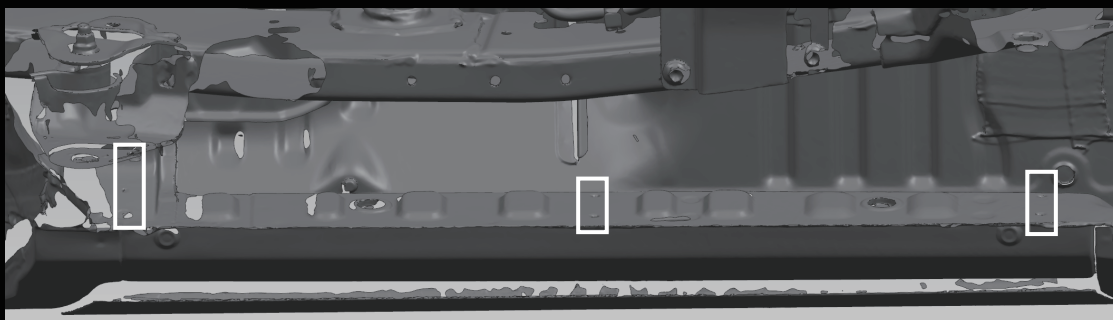


INSTALLATION INSTRUCTION
TOYOTA LC 71NS Side Bumper Kit

丰田LC 71
TOYOTA LC 71



01.

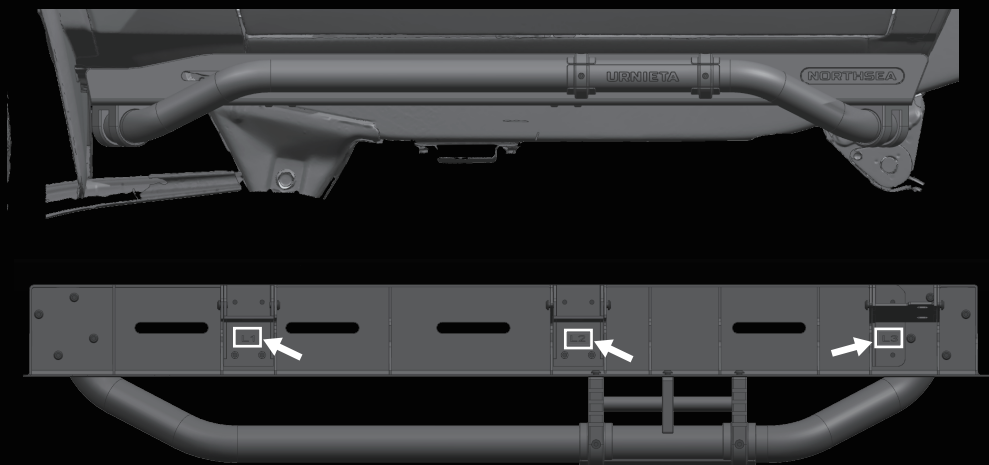


拆除原车踏板（备注：无踏板拆除原车对应安装螺丝）

REMOVE THE ORIGINAL PEDALS

(NOTE: IF THERE ARE NO PEDALS, REMOVE THE CORRESPONDING INSTALLATION SCREWS OF THE ORIGINAL CAR)

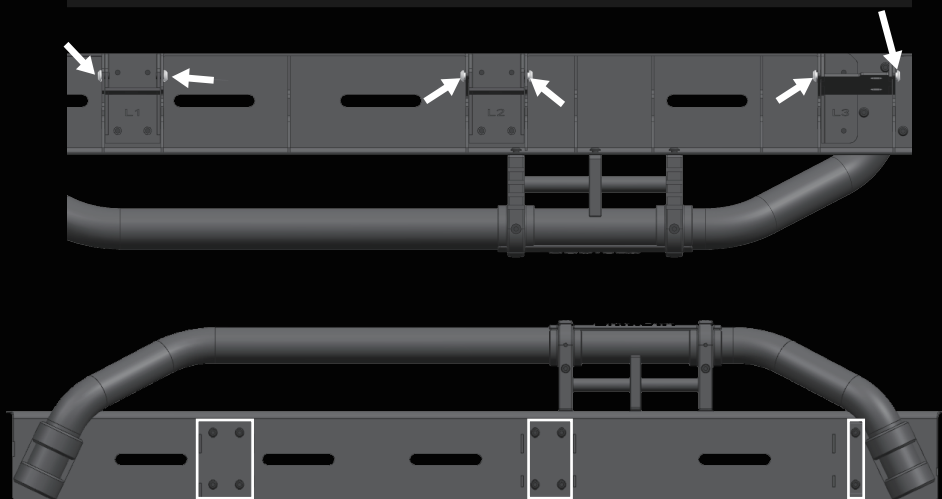
02.



使用原车螺丝安装新侧杠（备注：注意查看支架上字母L:左侧 R:右侧）

USE THE ORIGINAL CAR SCREWS TO INSTALL THE NEW SIDE BAR (NOTE: PAY ATTENTION TO THE LETTERS L: LEFT SIDE R: RIGHT SIDE)

03.



调整侧杠外边沿到车身距离（备注：如图所示拆松侧杠调整螺丝，若侧杠距离均匀则不需要调整）

ADJUST THE DISTANCE FROM THE OUTER EDGE OF THE SIDE BAR TO THE VEHICLE BODY

(NOTE: LOOSEN THE SIDE BAR ADJUSTMENT SCREWS AS SHOWN IN THE FIGURE. IF THE SIDE BAR DISTANCE IS UNIFORM, NO ADJUSTMENT IS REQUIRED)

■ 产品参数

PRODUCT PARAMETERS

NAME	产品名称	LC71NS侧杠套件
MATERIAL	材 质	铝镁合金
COLOUR	颜 色	武士黑
SPECIFICATIONS	产品规格	1291MM*502MM*177MM

■ 出厂配置

FACTORY CONFIGURATION

名称	侧杠总成X2
----	--------

URNIETA[®] NORTH SEA