

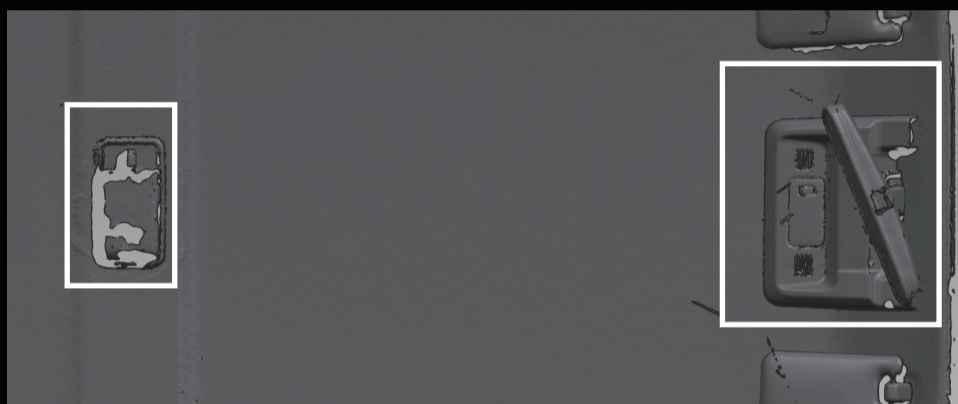
INSTALLATION INSTRUCTION

TOYOTA LC 71/76 Engine Compartment control system

丰田LC 71/76  
TOYOTA LC 71/76



# 01.



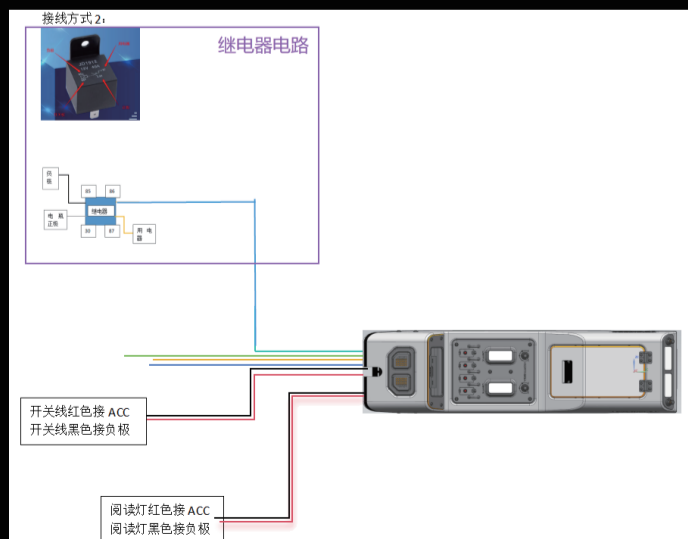
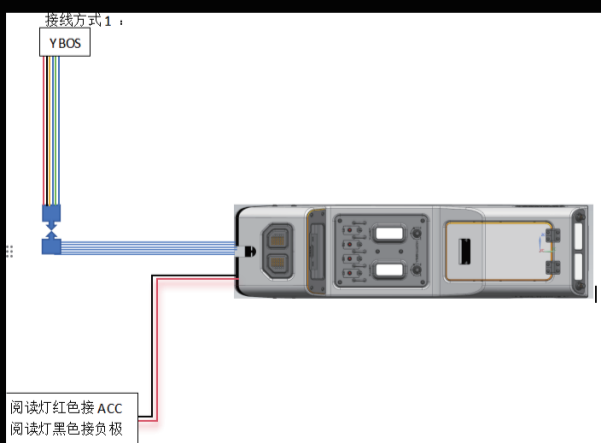
拆除原车车顶前后视镜和饰板、中间照明灯  
REMOVE THE ORIGINAL CAR'S ROOF, FRONT AND REAR MIRRORS, TRIM, AND CENTER LIGHTING

# 02.



拆除图示位置螺丝，安装对应电台面板支架与外面板盖板  
(备注：本产品支持八重洲500D、ICOM2730、八重洲6000R，对应有可以替换专用电台面板支架)  
REMOVE THE SCREWS AT THE POSITION SHOWN IN THE FIGURE, AND INSTALL THE CORRESPONDING RADIO PANEL BRACKET AND OUTER PANEL COVER  
(NOTE: THIS PRODUCT SUPPORTS YAESU 500D, ICOM2730, YAESU 6000R, AND THERE ARE CORRESPONDING DEDICATED RADIO PANEL BRACKETS THAT CAN BE REPLACED)

# 03.



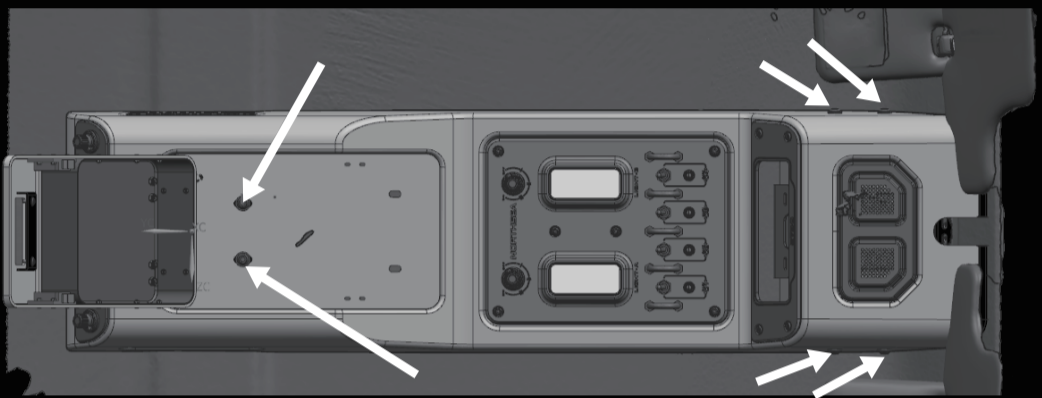
组装好对应电台面板盖板后，插入30CM面板延长线束并如下图所示接线  
AFTER ASSEMBLING THE CORRESPONDING RADIO PANEL COVER, INSERT THE 30CM PANEL EXTENSION HARNESS AND CONNECT AS SHOWN BELOW

# 04.



**使用原车后视镜螺丝与照明灯安装机顶盒支架（注意：前面支架与后视镜一起固定）**  
 USE THE ORIGINAL REARVIEW MIRROR SCREWS AND LIGHTS TO INSTALL THE SET-TOP BOX BRACKET  
 (NOTE: THE FRONT BRACKET IS FIXED TOGETHER WITH THE REARVIEW MIRROR)

# 05.



**使用机顶盒专用螺丝安装机顶盒（注意：安装机顶盒前必须包边条装在机顶盒上）**  
 USE THE SPECIAL SCREWS FOR THE SET-TOP BOX TO INSTALL THE SET-TOP BOX  
 (NOTE: THE EDGE STRIP MUST BE INSTALLED ON THE SET-TOP BOX BEFORE INSTALLING THE SET-TOP BOX)

### ■ 产品参数

### PRODUCT PARAMETERS

NAME	产品名称	集成机顶盒
MATERIAL	材 质	铝镁合金/复合材质
COLOUR	颜 色	武士黑
SPECIFICATIONS	产品规格	991MM*260MM*96MM

### ■ 出厂配置

### FACTORY CONFIGURATION

名称	操控系统主体X1	侧杠总成X2
	主体前后安装支架X1	包边条X1
	2730电台外板X1	2730面板支架X1
		500D面板支架X1